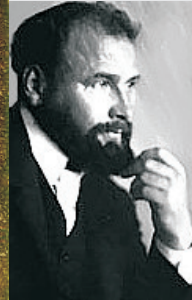


## Modern Art Intro:

**Modern art** was always attached to **theory**. Without knowledge of the theory attached to a particular work, viewers had little chance of actually understanding the works presented. This led the public at large to believe that art was in a period of decline, and that the pieces produced from 1900 to approximately 1980 were technically deficient, and artistically inferior to their predecessors.



**Gustav Klimt,**  
**The Kiss, 1907-08.**



## Art Nouveau

Art Nouveau was a style of decoration and architecture of the late 19th and early 20th centuries that was a prelude to 20th-century **modernism**. This new style was characterized by the depiction of leaves and flowers in flowing, sinuous lines.

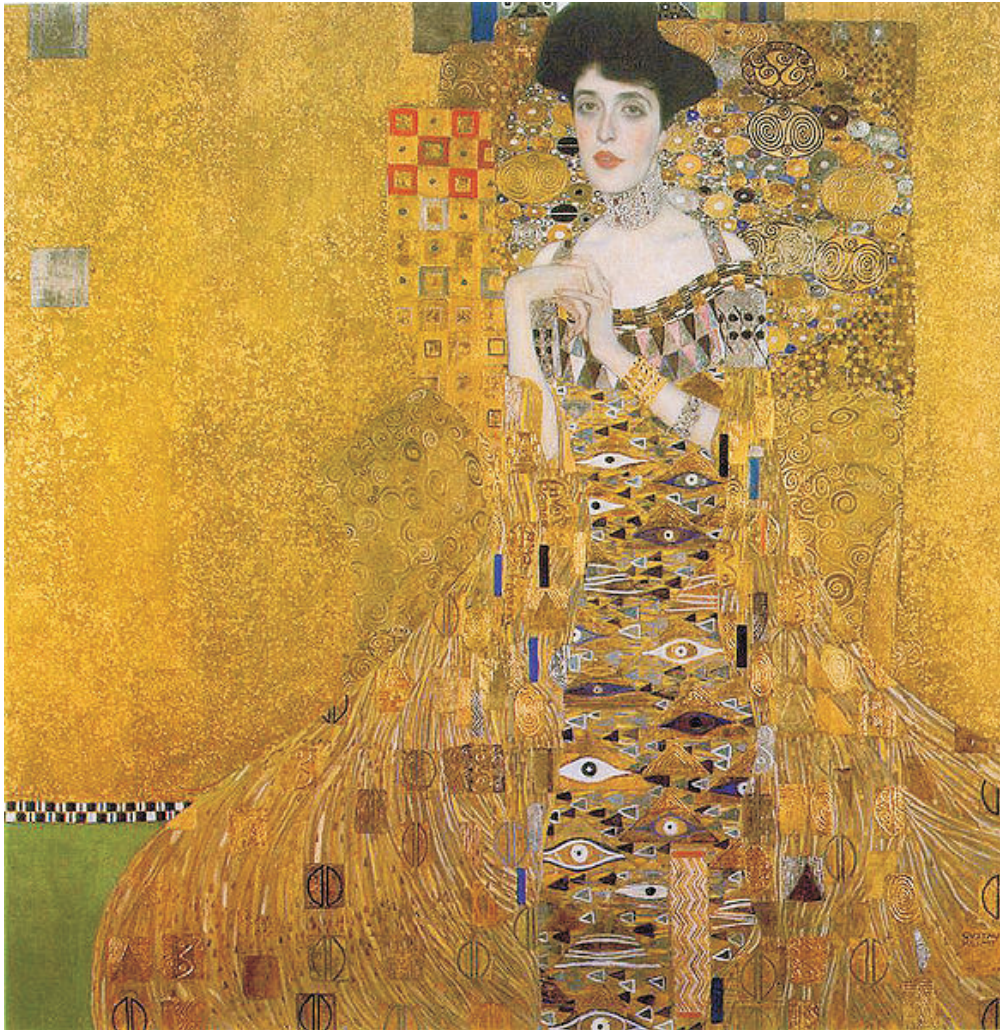
### Gustav Klimt

Gustav Klimt became the most famous **Nouveau artist**, in his **The Kiss** painting, only the faces and hands of this couple are visible; all the rest is great swirl of gold, studded with colored rectangles as if to express visually the emotional and physical explosion of erotic love.

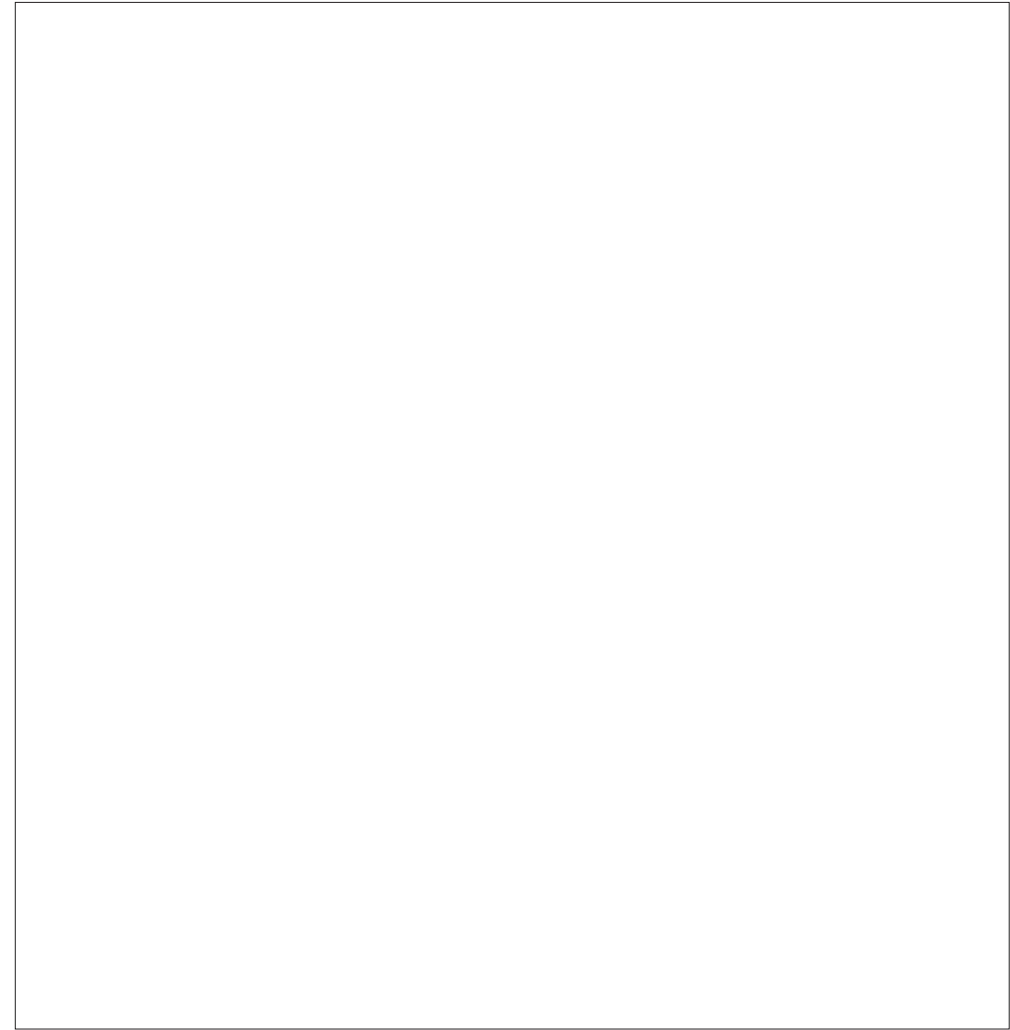


Name: \_\_\_\_\_

**Make a Sketch of Klimt's Adele Bloch-Bauer I (portrait)**  
Use Line, Proportion and Detail throughout your drawing.



**Gustav Klimt, Adele Bloch-Bauer I (portrait), 1907.**



**Gustav Klimt, Adele Bloch-Bauer I (portrait), 1907.**

**K/U** Use of Line, Proportion  
& Detail: