

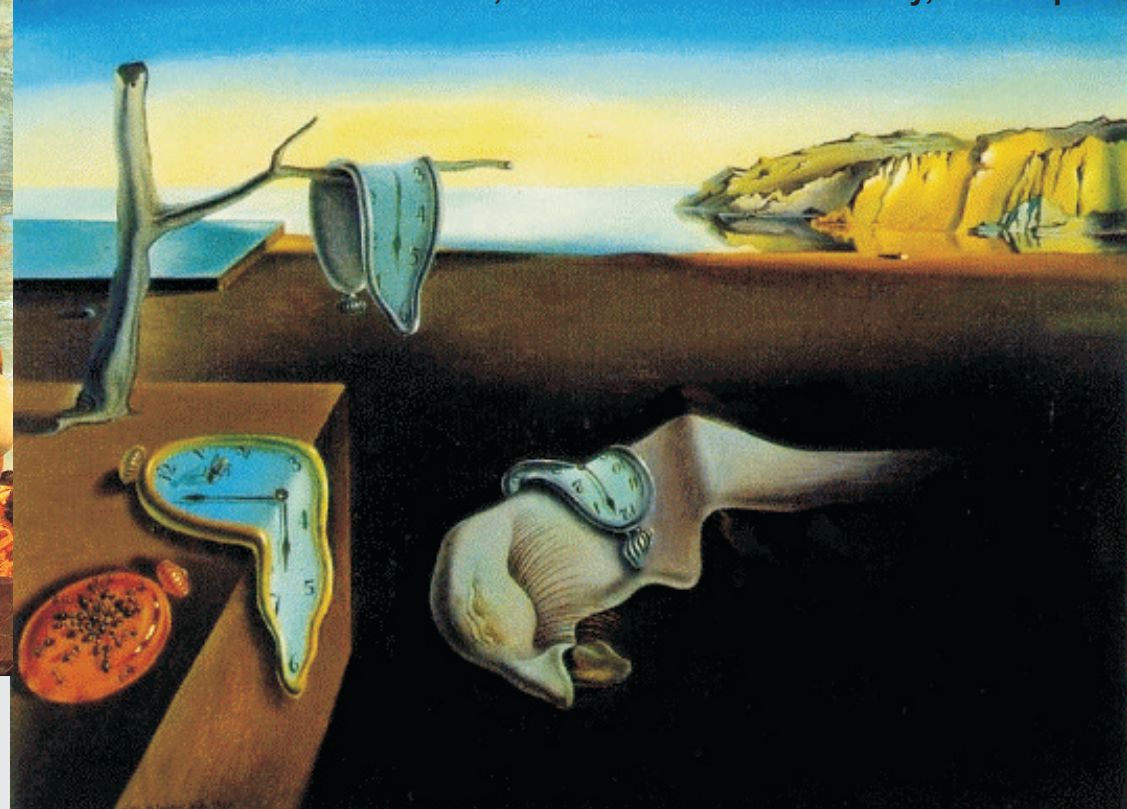
Surrealism

Salvador Dali

Surrealist often juxtaposed the whimsical with the absurd, drawing on psychological theories to direct their compositions. **Dali's** pieces generally transport the viewer to a fantasy world where the subconscious and the conscious meet, creating imagery that is often disturbing for no apparent reason to the viewer. **The Soft Construction with Boiled Beans** was finished 6 months before the Spanish Civil War. Various parts of one same body are hurting each other; it's **Dali's** report concerning the atrocities of such event.

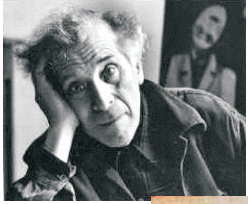


Salvador Dali, *The Persistence of Memory*, 1931. Spain.



Salvador Dali, *Soft Construction with Boiled Beans: Premonition of Civil War*, 1936.



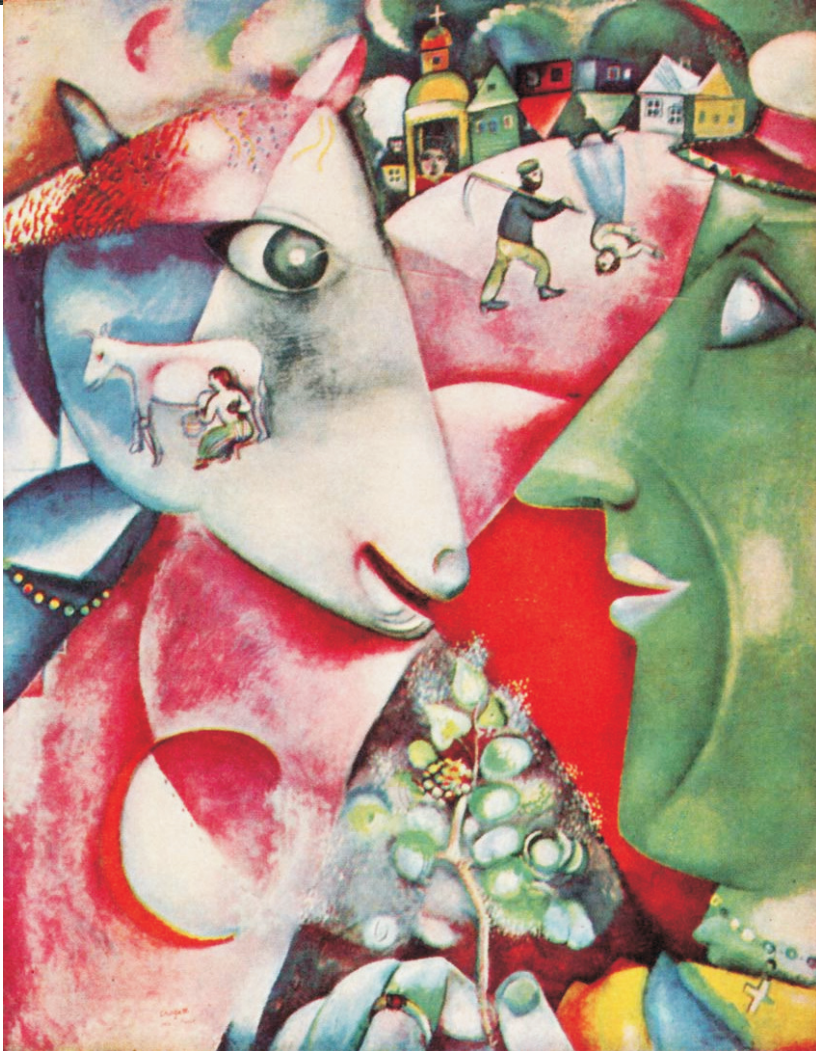


Marc Chagall

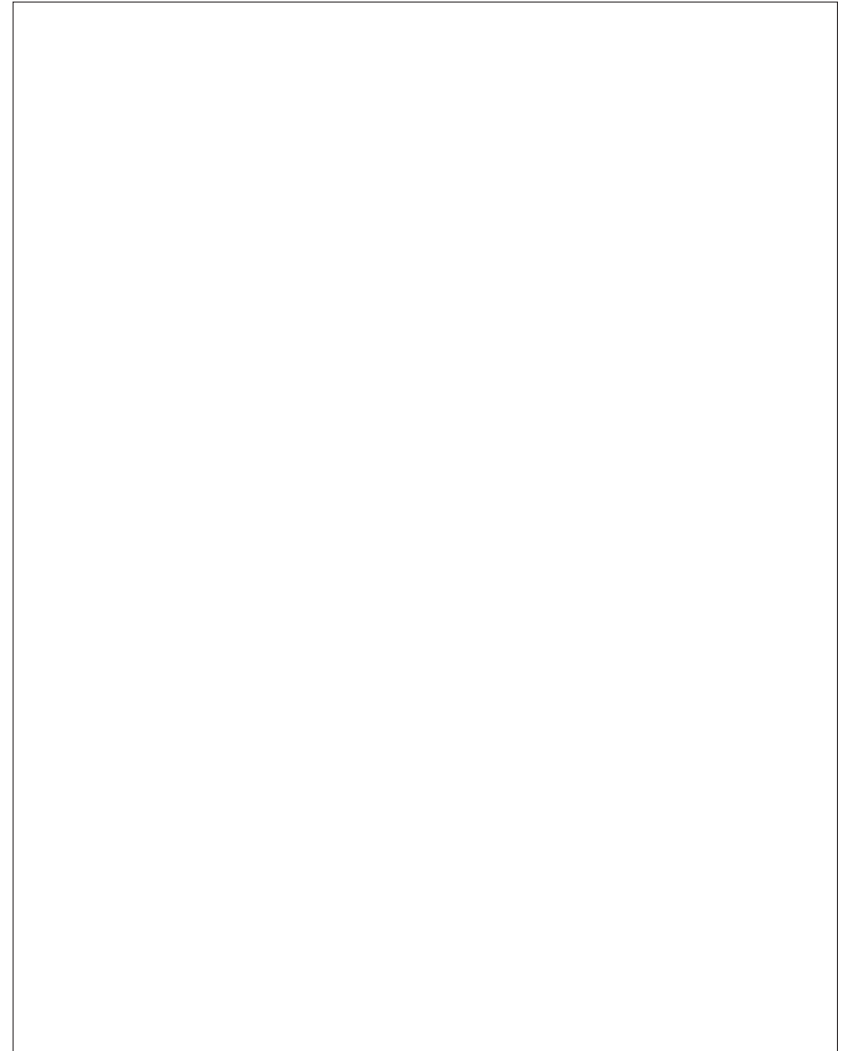
He was a Russian born French painter, born to a humble Jewish family in the ghetto of a large town in White Russia. His **I am the Village** painting depicts his personal recollection with his early life and growing up in a Russian Jewish village.

Make a Sketch of Chagall's **I am the Village**

Use Line, Proportion and Detail throughout your drawing.



Marc Chagall, I am the Village, 1911, Russia.



Marc Chagall, I am the Village, 1911, Russia.